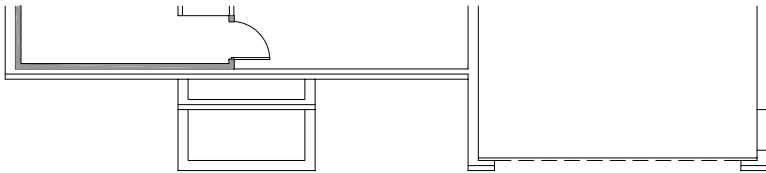
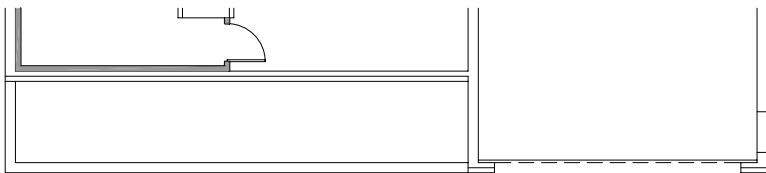


FINISHED BASEMENT PLAN ELEV. #1 & #3



FINISHED BASEMENT PLAN ELEV. #2



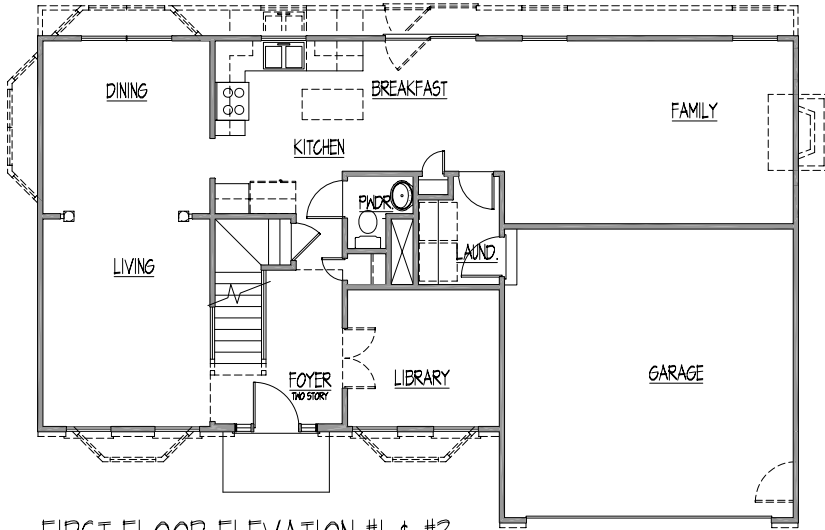
FINISHED BASEMENT PLAN ELEV. #4

JONATHAN P. BUTTS
 ARCHITECTURAL DESIGNER
 444 CONCORD COURT
 BALTIMORE, MARYLAND 21254
 (410) 544-5878

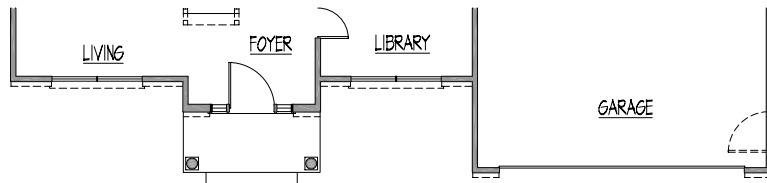
CONTENTS
 FINISHED BASEMENT PLANS
 SCALE: 1/4" = 1'-0"
 DATE: JUNE 13, 2003
 PROJECT: THE CAMBRIDGE I & II
 PROJECT TITLE:

ISSUE	DATE	DESCRIPTION

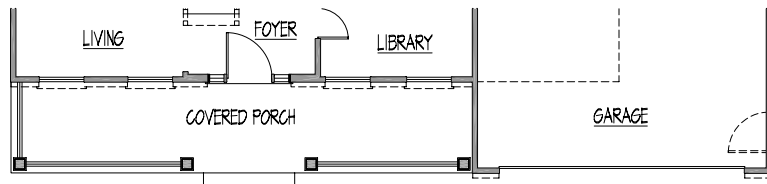
16
 A-20



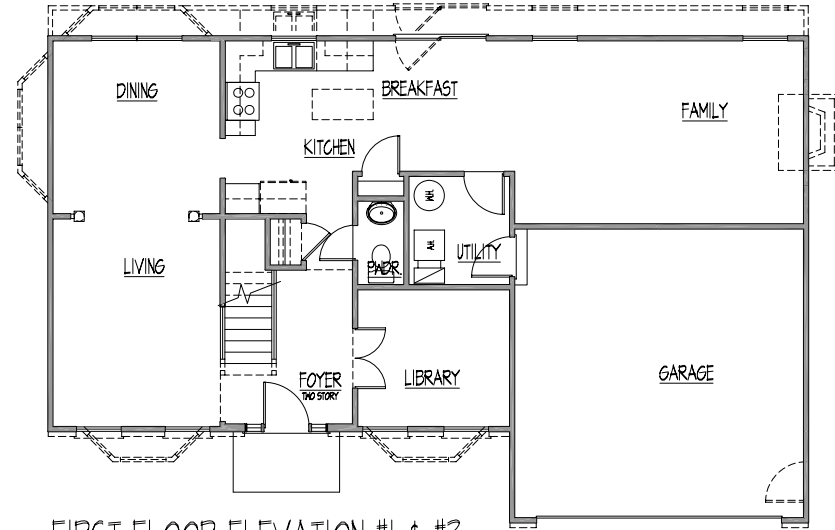
FIRST FLOOR ELEVATION #1 & #3



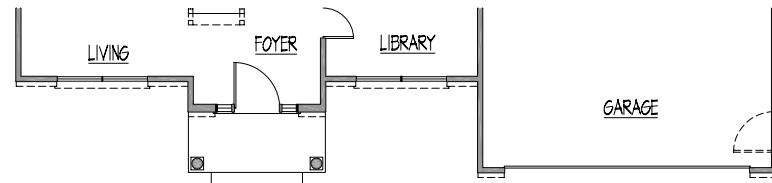
FIRST FLOOR ELEVATION #2



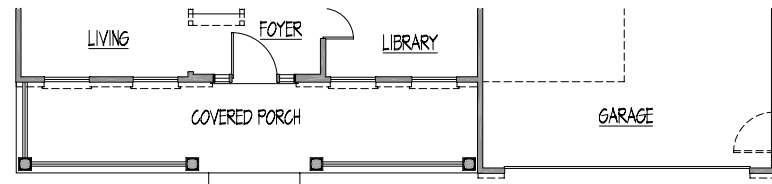
FIRST FLOOR ELEVATION #4



FIRST FLOOR ELEVATION #1 & #3



FIRST FLOOR ELEVATION #2



FIRST FLOOR ELEVATION #4

JONATHAN P. BUTTS
 ARCHITECTURAL DESIGNER
 446 CONCORD COURT
 BALTIMORE, MARYLAND 21284
 410.946.4801

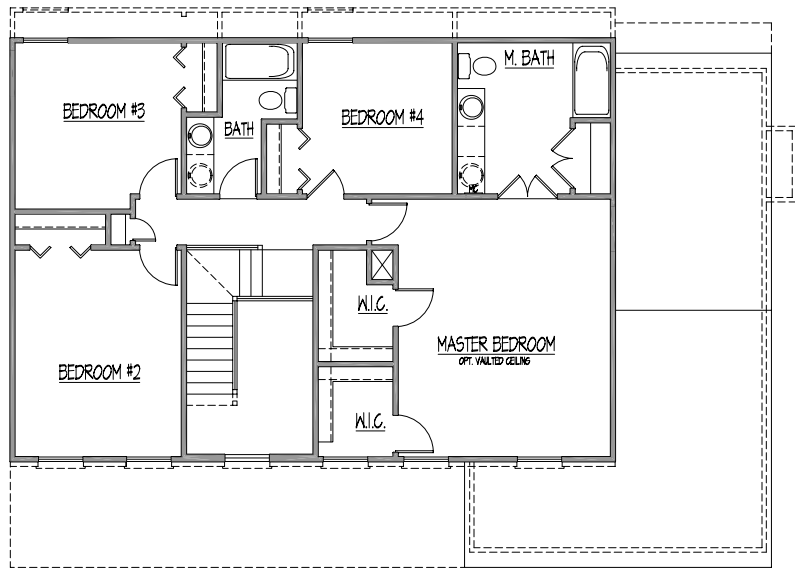
FIRST FLOOR PLANS
 DATE: JUNE 12, 2009
 PROJECT TITLE: THE CAMBRIDGE I & II

CONVENTS
 SCALE: 1/8" = 1'-0"
 PROJECT TITLE

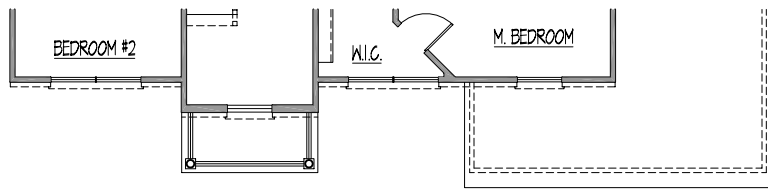
ISSUE	DATE	DESCRIPTION

SHEET 16

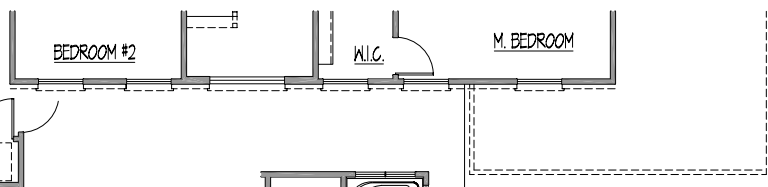
A-3



SECOND FLOOR CAMBRIDGE I ELEVATION #1 AND #4

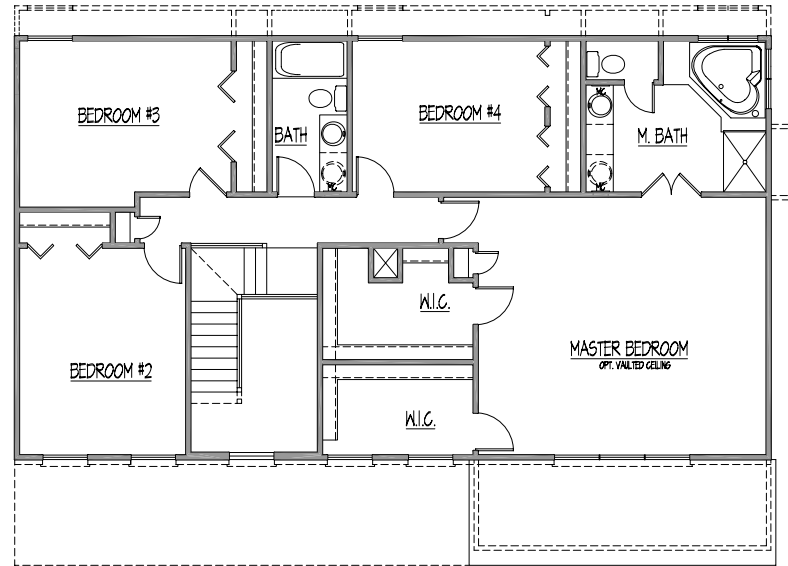
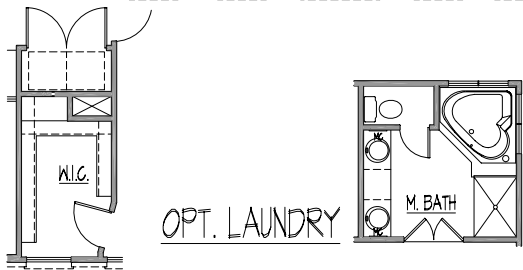


SECOND FLOOR CAMBRIDGE I ELEVATION #2

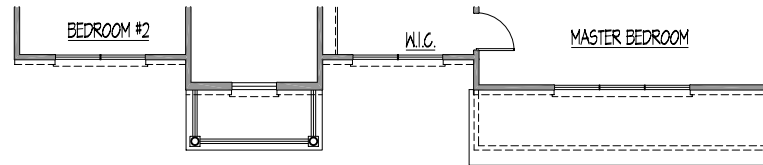


SECOND FLOOR CAMBRIDGE I ELEVATION #3

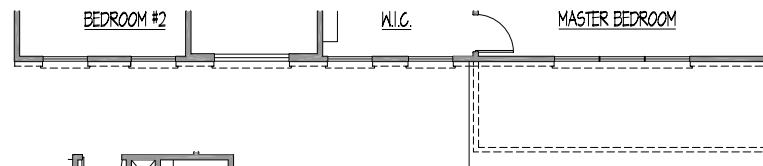
OPT. CAMBRIDGE I SUPER BATH
SCALE 1/4"=1'-0"



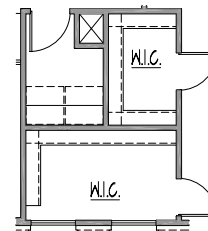
SECOND FLOOR CAMBRIDGE II ELEVATION #1 AND #4



SECOND FLOOR CAMBRIDGE II ELEVATION #2



SECOND FLOOR CAMBRIDGE II ELEVATION #3



CAMBRIDGE II
OPT. LAUNDRY
CAMBRIDGE II